

# Bucks Co. biotech center designated innovation zone

**JOHN GEORGE**  
STAFF WRITER

**BUCKINGHAM** — The Pennsylvania Biotechnology Center of Bucks County, which officially opened its doors last week, has received designation as the focal point for the state's 19th Keystone Innovation Zone.

Jeannine Marttila, executive director of the Pennsylvania Department of Community and Economic Development's Technology Investment Office, said the state will provide a \$250,000 grant to cover operational costs for the new KIZ in Central Bucks.

The grant will be administered by the state's Ben Franklin Technology Development Authority.

The \$15 million biotech center was created through a partnership between the Hepatitis B Foundation, now based at the center, and Delaware Valley College in Doylestown.

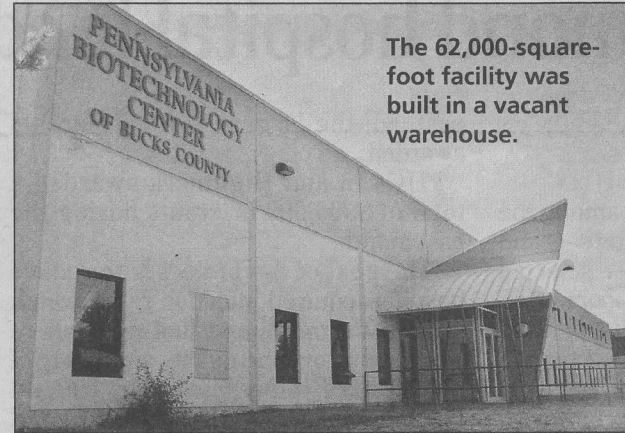
The 62,000-square-foot facility — built in a vacant warehouse — was established to serve as a research center, educational campus and incubator for biotech startups.

conducted at the site.

He expects more than 100 researchers and entrepreneurs will be working at the center when the facility is fully leased.

"I promise you," Block said, "great discoveries are going to come from here."

jgeorge@bizjournals.com | 215-238-5137

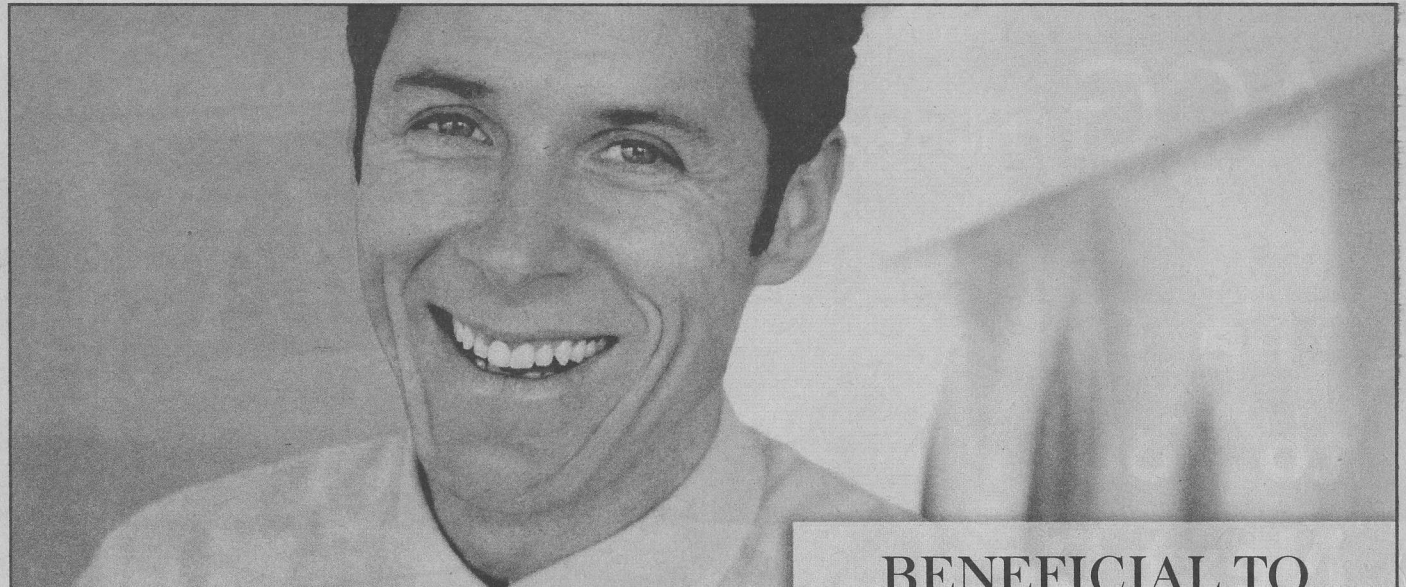


The 62,000-square-foot facility was built in a vacant warehouse.

JOHN GEORGE | BUSINESS JOURNAL

*'I promise you, great discoveries are going to come from here.'*

**Dr. Timothy Block**  
Hepatitis B Foundation



**BENEFICIAL TO**

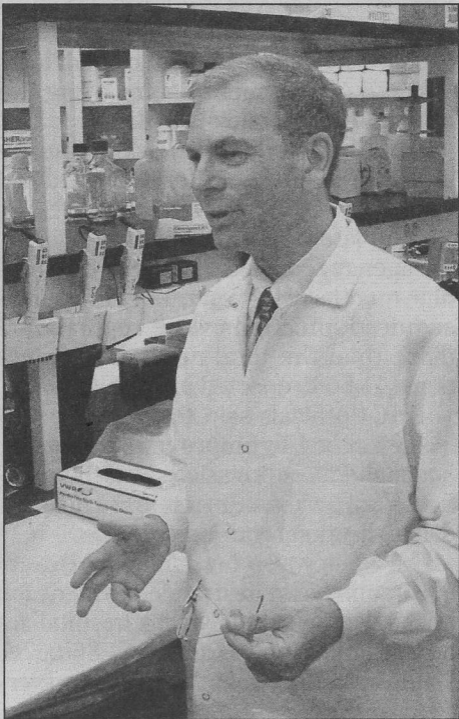
tech startups.

The KIZ designation means companies who locate within the zone are eligible for research-and-development tax credits and other support including financial help for work force training and site preparation.

Since the KIZ program was established in early 2004, more than 2,000 jobs have been created or retained at about 420 Pennsylvania companies based in the zones.

Dr. Timothy Block, co-founder and president of the Hepatitis B Foundation, is also president of the nonprofit biotechnology center.

Block, a driving force in the creation of the center, said the facility will accelerate the pace of the collaborative research



JOHN GEORGE | BUSINESS JOURNAL

**Dr. Timothy Block in a research lab.**